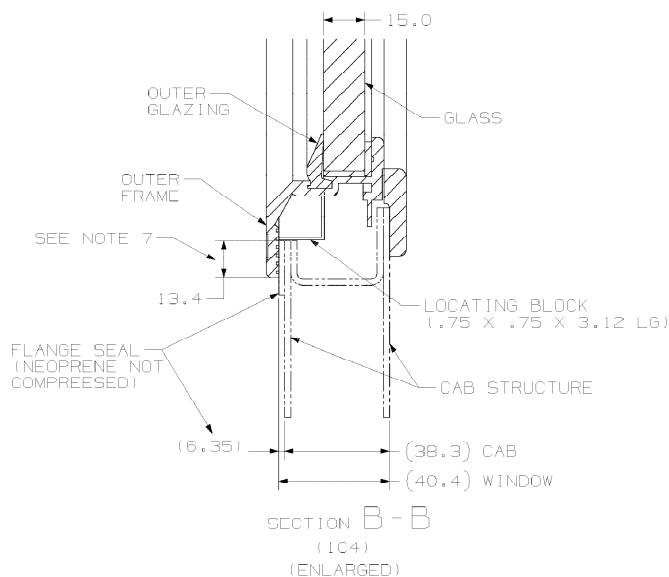
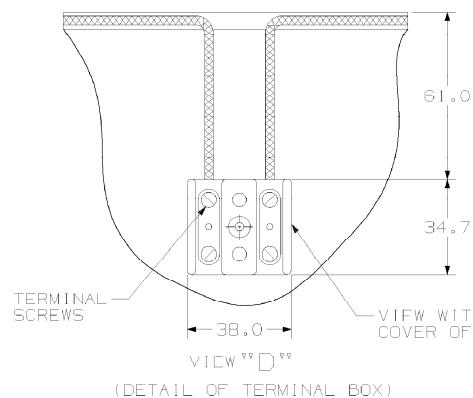
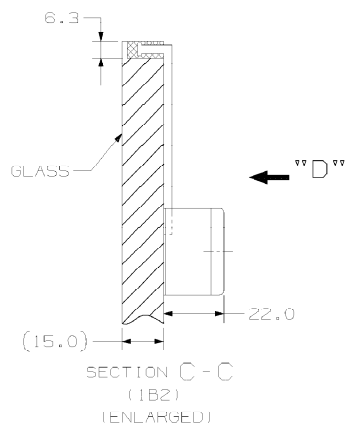


ORG NO	840633330	SH	2
--------	-----------	----	---



REVISION HISTORY			
REV	DATE	DRAFTER ENGINEER	CO. #, IN # DESCRIPTION
A	12-SEP-2012	LAN WU PRAVEEN YARMATI A	CO-145680 IN-1

THIS DRAWING, WHICH CONTAINS PROPRIETARY INFORMATION, IS THE PROPERTY OF GENERAL ELECTRIC COMPANY. IT SHALL NOT BE REPRODUCED IN ANY MANNER NOR DISCLOSED TO THIRD PARTIES WITHOUT WRITTEN PERMISSION OF GENERAL ELECTRIC COMPANY.



- NOTES:

1. UNLESS OTHERWISE SPECIFIED FIGURES DICT THE EXTERIOR FACING SURFACES OF THE GLAZING. WHEN INTERIOR SPALL CONTROL LAMINATIONS ARE USED THEY ARE IN THE FAR SIDE OF THE VIEW.
2. GLAZING FURNISHED SHALL BE CERTIFIED TO EN 15152. CERTIFICATION MUST BE READABLE FROM THE INSIDE OF LOGOVIEW AFTER ASSEMBLY. PERMANENT MARKINGS PER 84A204567AE SECTION 12.1
3. A DISPOSABLE STICKER APPROX. 2.0 X .75 LABELED "INSIDE" SHALL BE PLACED ON THE INTERIOR FACING SURFACE OF THE GLAZING.
4. WINDSHIELD FRAMES SHALL BE ANODIZED OR POWDER COATED FLAT BLACK.
5. TERMINAL BLOCKS ARE AFFIXED TO INSIDE SURFACE OF WINDOW IN POSITION AS SHOWN.
6. HEATED GLASS ELECTRIC CIRCUIT SHALL DISIPATE 600 W/SQ. M. HEATED AREA OF GLASS SHALL NOT HAVE TEMPERATURE DIFFERENCE GREATER THAN 8°C BETWEEN ANY TWO POINTS.
7. OVERLAP OF WINDOW FRAME TO CAB OPENING IS REQUIRED THROUGH ALL SECTIONS INCLUDING CORNERS.
8. RETAINING RING SHALL BE AFFIXED WITH ONLY FOUR SCREWS AT CORNERS AND REMAINING TAPPING SCREWS SHOULD BE PACKED SEPARATELY.
9. EDGES OF THE WINDSHIELD SHOULD BE PREPARED AND FINISHED IN A MANNER THAT WILL NOT ALLOW CRACK PROPAGATION AND GROWTH FROM THE EDGE OF THE WINDSHIELD.

DIMENSIONS ARE IN MILLIMETERS (X,X) IN INCHES UNLESS OTHERWISE SPECIFIED TOLERANCES PER 84A226035-VC	CTO SYMBOL:  CTO IDENTIFICATIONS: PLAN REF 410729803 REF 84A204567AEP1	CTO'S PRESENT? NO  GE TRANSPORTATION ERIE, PA
SIGNATURES SAJID AHMED SAJID AHMED GREGORY BADDERS	DATE 18-OCT-2011 18-OCT-2011	TITLE OUTLINE-WINDSHIELD FIRST MADE FOR JS37AC1 Dwg NO 84C633330 CONT ON 1 SH

DRAFTING PRACTICES ON THIS DRAWING CONFORM TO THE B4A22Z563
SERIES OF DOCUMENTS BASED ON ASME Y14.5 1994 & Y14.100 2000

LIGLOC